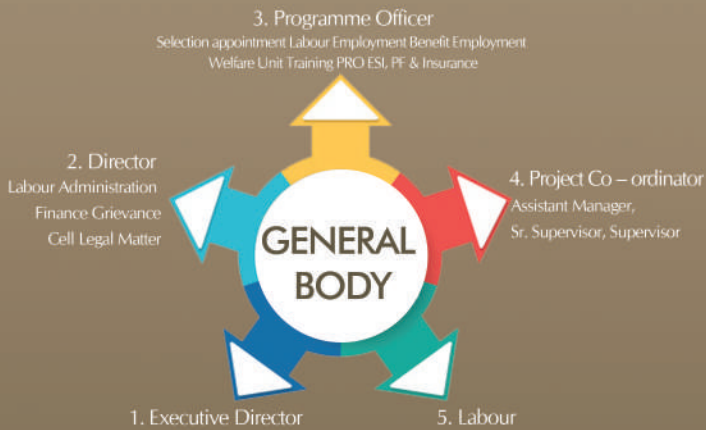


We also maintain the following records

- A) Register of persons employed
- B) Separate files for each person employed, containing all details about the employee, incl. Copies of proof of address and proof of identity
- C) Muster Roll Register
- D) Wage register clearly indicating the PF and ESI components of employee and employer
- E) Register for overtime/advances/fines/deductions etc.
- F) Wage slip clearly indicating the PF and ESI components of employee and employer
- G) Any other documents specified by the central/State Govt. Labour departments



**YOUTH SOCIAL SERVICE ORGANIZATION**  
SOCIAL SERVICE CENTER

M.A. College PO, Kathamangalam - 686 666, Cochin, Kerala  
☎ 9446510628 | 0485 2971222 | 8547266115  
e www.yssso.net | yssso95@gmail.com



**YOUTH SOCIAL SERVICE ORGANIZATION**  
**SOCIAL SERVICE CENTER**

An ISO 9001:2000 certified Organisation approved by Govt. of India Niti Aayog





## AIMS & OBJECTIVES

To train and develop the Youths of India with patriotic vision, Social Commitment, Conviction in Moral Values and Lead them to become a Model Citizen of India, is the First and Foremost Objectives of this Association. The Association stands for the Social, Economic, and Cultural Development of the people irrespective of caste, creed, religion, sex etc. The activities shall be governed by the Societies Registration Act 1860.

## VISION

- Inspired by the Christian faith and values.
- Visualizes a society in which peace, justice and equality prevail irrespective of caste, creed, language and religion.
- Envisages a society where the poor, women, the marginalised and under privileged lead a quality life with dignity and have equal opportunity for their involvement in the development process.

## MISSION

- Inspired by the Christian faith and values.
- Creating opportunities for the participation of socially and economically marginalised sections in the development process through networking & alliance building
- Supports local self governance, protection of human rights and sustainable livelihood measures
- Responds to the environmental issues, natural and manmade disasters and strives to bring the victims to the mainstream while upholding the human dignity.
- Promotes gender mainstreaming at all appropriate levels, mobilises resources in favour of the poor.

## OUR ACTIVITIES

- Promote Socio-Economic Development at the grass root level.
- Empowerment of women through skill up gradation.
- Promote Sustainable Management of Agriculture & Natural Resources
- Watershed Management
- Poverty Eradication
- Eradication of child Labor and protection of Child Rights.
- Youth development through collective Action .
- Promote Community Base Disaster Management
- Promote Micro Enterprises for Accelerating Economic Development .
- Training ,Participatory Rural Development ,Monitoring and evaluation

## PROJECTS

Nabard Watershed Programme

2011-2012- State ' A' Level Accreditation (Western Chats Cell - Kerala Govt.)

Suchitwa Mission Service Provider

Green Highway Mission (Govt.of India) Accredited Agency

Kudumbasree (Govt.of Kerala) Accredited Agency

Jalanidhi Project Supporting Organisation

IWMP (Integrated Watershed Management Project) Technical Supporting Organisation

National Rural Employment Guarantee Act, 2005



## ACHIEVEMENTS

2016-17 – Accreditation with ECOSOC United Nations Economic and Social Council

2016-17 – UN DPI Status Social Impact Assessment Unit

(Ernakulam, Alapuzha, Kottayam, Thrissur District)

